

Remittance Prices Worldwide

Issue 26, June 2018

This Report reflects the latest trends observed in the data published in June 2018. Remittance Prices Worldwide is available at <http://remittanceprices.worldbank.org>

Overview

Remittance Prices Worldwide (RPW) monitors remittance prices across all geographic regions of the world. Launched in September 2008, RPW monitors the cost incurred by remitters when sending money along major remittance corridors. RPW is used as a reference for measuring progress towards global cost reduction objectives, including the G20 commitment to reduce the global average to 5 percent, which is being pursued in partnership with governments, service providers, and other stakeholders.

Since Q2 2016, *RPW covers 48 remittance sending countries and 105 receiving countries, for a total of 365 country corridors worldwide.* RPW tracks the cost of sending remittances for three main RSP types: Banks, MTOs, and Post Offices. MTOs include both traditional providers and innovative/fintech players. On average, 11.5 providers per corridor are tracked.

This Report uses data from RPW's most recent release to analyze the global, regional, and country specific trends in the average cost of migrant remittances.

Key Findings

- The **Global Average** recorded a decrease from 7.13 percent in Q1 2018, to 6.99 percent in Q2 2018, representing a year-on-year decrease compared to Q2 2017, when this figure was recorded at 7.32 percent.
- The **International MTO Index** remained stable, decreasing slightly over the quarter to 8.00 percent in Q2 2018, from 8.16 percent in Q1 2018.
- The **Global Weighted Average** remained stable, recording a decrease from 5.23 percent in Q1 2018, to 5.10 percent in Q2 2018.
- The **Global SmaRT Average** for Q2 2018 was recorded at 4.76 percent.
- In Q2 2018, a total of 80 percent of all services recorded in RPW were below an average cost of 10 percent.
- South Asia remained the lowest cost receiving region, with an average cost of 5.17 percent. Sub-Saharan Africa remained the most costly region to send money to, with a 9.07 percent total average cost in Q2 2018.
- Banks remained the most expensive type of service provider, with an average cost of 10.41 percent.

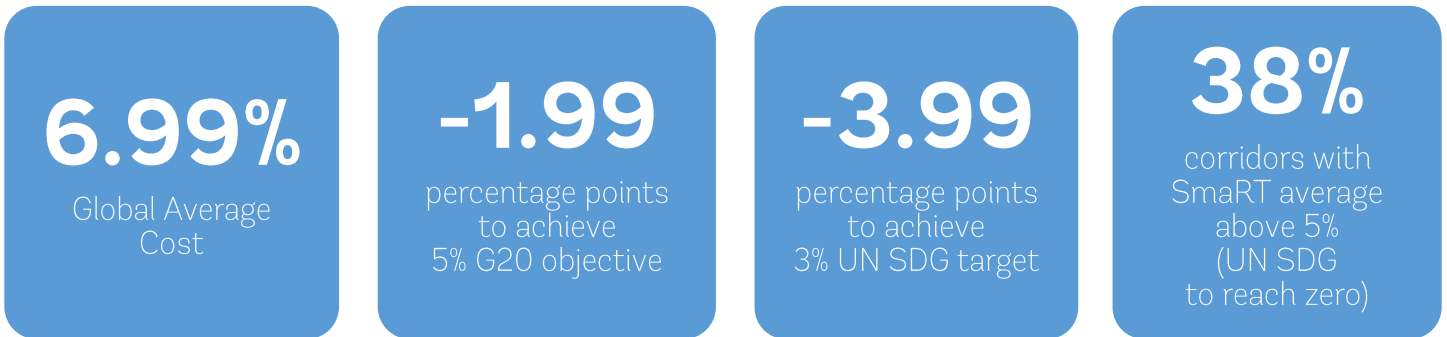
Contents

Progress Tracker	2
Global Trends.....	2
Trends in Corridor Average Total Costs	5
G8 and G20 Countries	6
Regional Trends	10
Costs by RSP Type	11
Costs by Sending and Receiving Method.....	12
Annex - Tables.....	14
Notes.....	17

Progress Tracker

RPW indicators are used to measure progress towards targets of global efforts for the reduction of remittance costs. The G8 (L'Aquila, 2010) and the G20 (Cannes, 2011 and Brisbane, 2014) committed to reduce the Global Average Total Cost to 5 percent. The UN SDGs have indicated a target of 3 percent for the Global Average, to be reached by 2030. At the same time, the UN SDGs have also committed to ensuring that in all corridors remittances can be transferred for 5 percent or less.

The figure below summarizes the progress towards these three targets.



Global Trends

Global Average Total Cost remains stable

In Q2 2018, the Global Average cost for sending remittances was 6.99 percent, below the recorded average of 7.13 percent in Q1 2018. The Global Average remained below 8.00 percent, as it has since Q3 2014 (see Figure 1 below, and Table 1 in the Annex). Overall this represents a decline of 2.68 percentage points since Q1 2009, when the figure was recorded at 9.67 percent.

International MTO Index

The International MTO Index tracks the prices of MTOs that are present in at least 85 percent of corridors covered in the RPW database.ⁱ In Q2 2018, the International MTO Index remained stable, recording a slight decrease to 8.00 percent from the previous value of 8.16 percent in Q1 2018.

Global Weighted Average

In addition to the Global Average, a weighted average total cost is calculated, which accounts for the relative size of the flows in each remittance corridor.ⁱⁱ The Global Weighted Average of sending remittances, as illustrated in Figure 2 (see also Table 1 in the Annex), has at times shown a different pattern from the simple average. The Global Weighted Average has remained stable in Q2 2018, recorded at 5.18 percent. This marks the 5th consecutive quarterly decrease of this figure – recorded at 5.65 percent in Q1 2017.

Figure 1 Global Average Total Cost for sending USD 200ⁱⁱⁱ

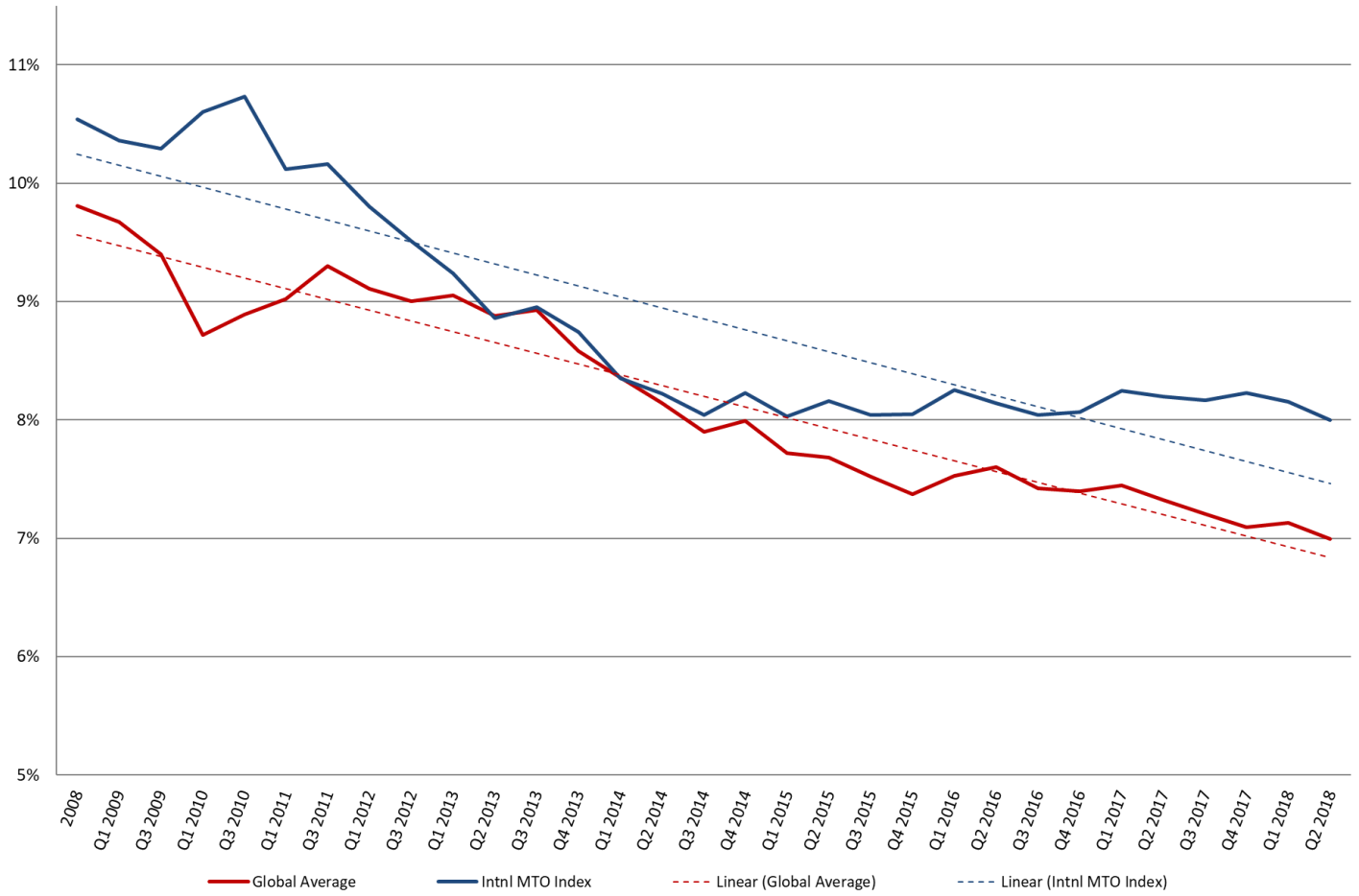
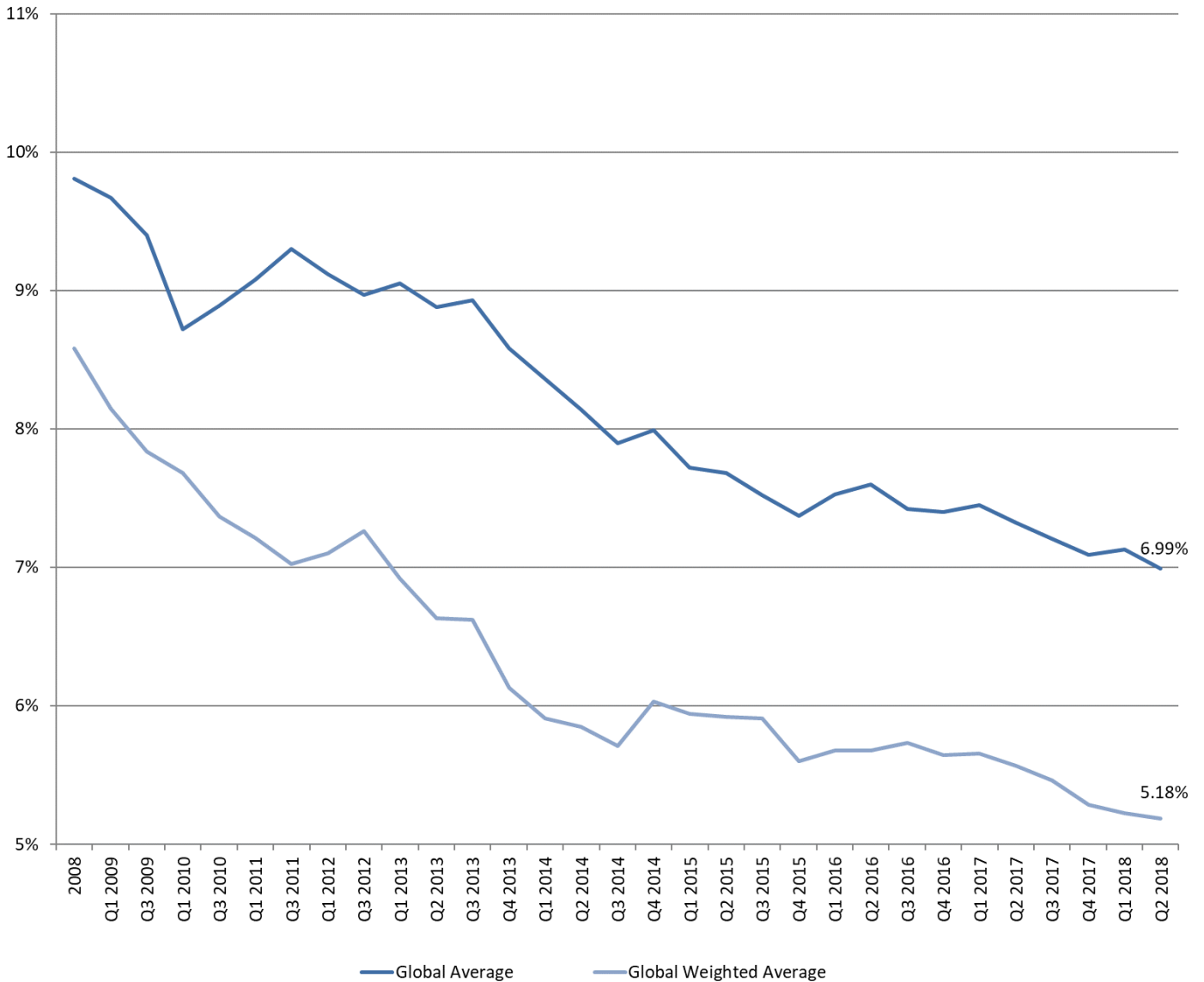


Figure 2 Global Weighted Average



Smart Remitter Target (SmaRT)

To complement the Global Average and Global Weighted Average described above, the World Bank introduced the SmaRT indicator in Q2 2016. This indicator aims to reflect the cost that a savvy consumer, with access to sufficiently complete information, could pay to transfer remittances in each corridor.

SmaRT is calculated as the simple average of the three cheapest services for sending the equivalent of USD 200 in each corridor and is expressed as a percentage of the total amount sent. In addition to transparency, services must meet additional criteria to qualify for being included in the SmaRT calculation, including transaction speed (five days or less), and accessibility, determined by geographic proximity of branches for services that require physical presence, or access to any technology or device necessary to use the service, such as a bank account, mobile phone, or the Internet.^{iv}

In Q2 2018, the Global SmaRT Average was recorded at 4.76 percent. This is a decrease from the value recorded in Q1 2018 of 5.27 percent. Since Q2 2017, however, this figure has come down from 5.93 percent, a nominal decrease of nearly 1.16 percentage points.

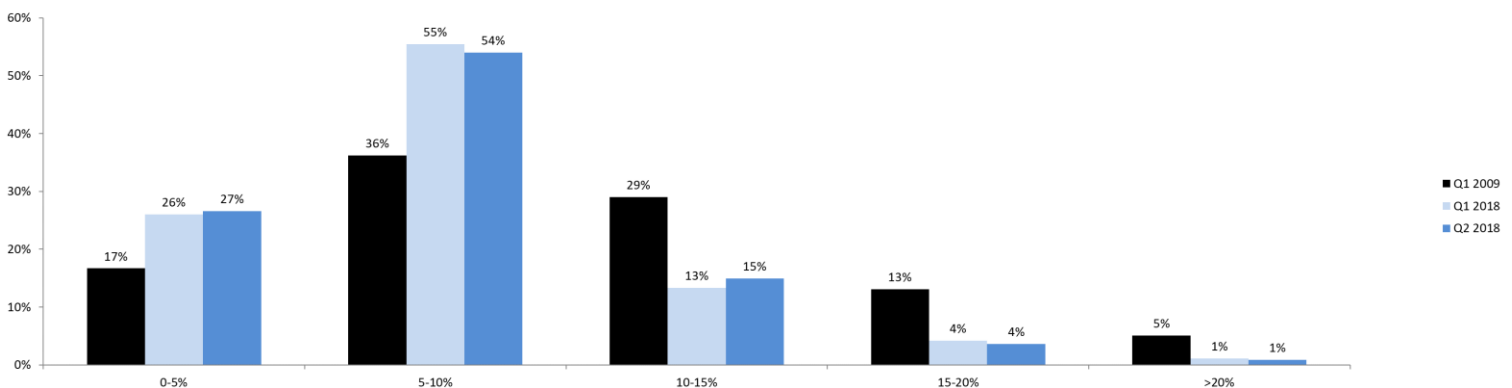
The potential of SmaRT can be appreciated even more at the corridor level, where the indicators can inform policy actions by identifying limitations at a more granular level. In Q2 2018, 26 of the 365 corridors did not have any SmaRT qualifying services, indicating that in these corridors there is an issue with either access or reach of services, or a lower level of competition. Of these 26 corridors, 15 are destined for Sub-Saharan Africa, 6 for the Middle East and North Africa, 3 for South Asia, 1 for Latin America and the Caribbean, and 1 for Europe and Central Asia. An overwhelming majority of these corridors have low Internet penetration and/or low transaction account penetration, which indicates that access to the Internet and accounts should be proactively targeted in these regions as a means of encouraging more diverse payment and remittance service offerings.

The UN SDGs committed to ensure that, by 2030, it should be possible to send remittances for 5 percent or less in every corridor. The SmaRT averages are used as a reference for this indicator, reflecting the fact that in any given corridor there are services available to customers and that meet the requirements described above, while also offering, on average, a cost that is in line with the UN SDG. As of Q2 2018, 55 percent of all corridors covered in the RPW database had SmaRT corridor averages below 5 percent.

Trends in Corridor Average Total Costs

Figure 3 shows that compared to Q1 2009, 18 percent more corridors have a total average cost in the 5-10 percent category in Q2 2018. There are 10 percent more corridors in the 0-5 percent category in Q2 2018 compared to Q1 2009. A total of 81 percent of all corridors exhibit total average costs below 10 percent. In Q1 2009, 47 percent of corridors were in the cost categories above 10 percent. Since Q1 2009, this proportion has decreased considerably, and is now at 20 percent.

Figure 3 Distribution of Average Total Costs

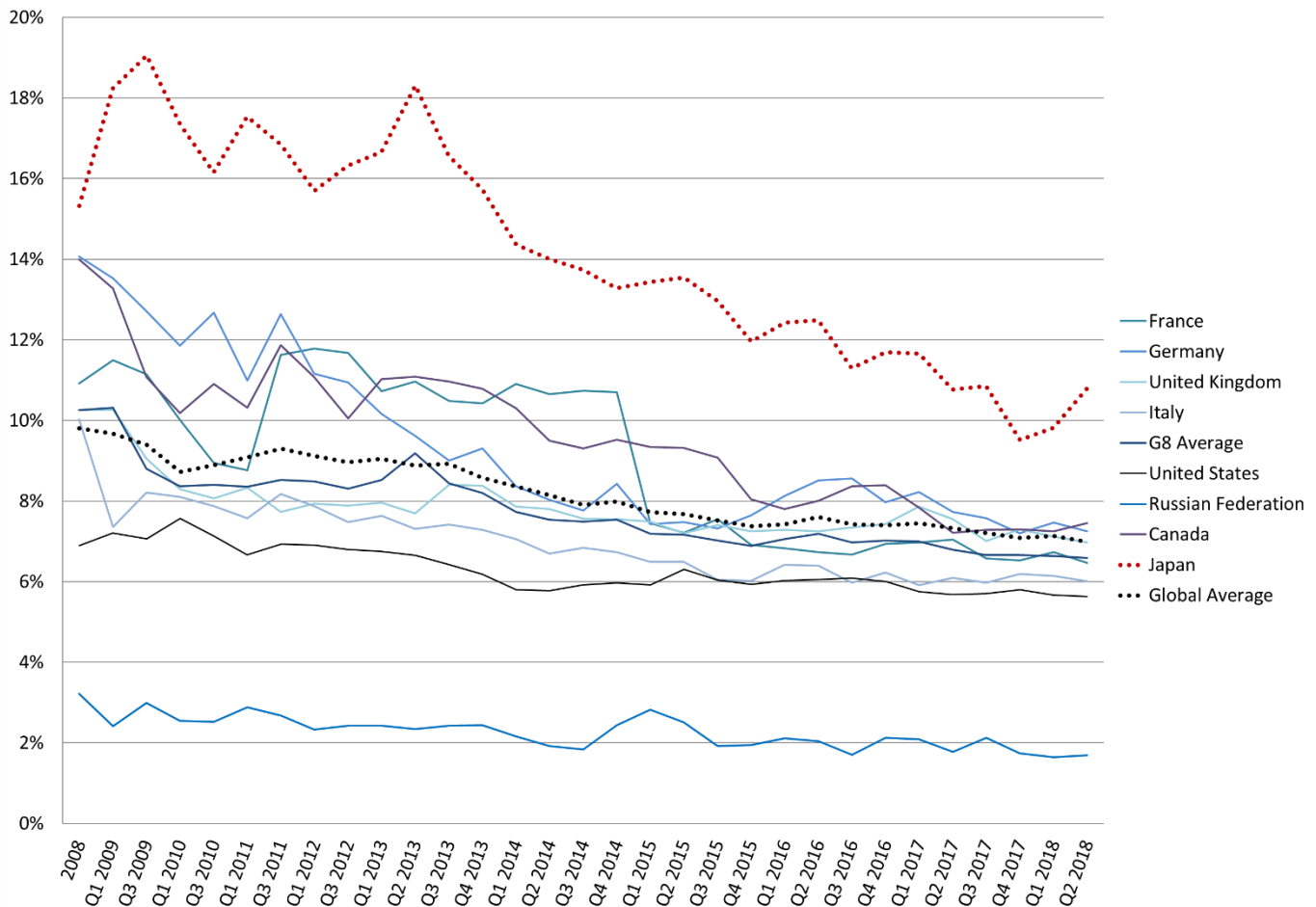


G8 and G20 Countries

Cost of sending remittances from G8 countries remains stable

The G8 countries include several of the major remittance sending countries in the world. The average cost of sending remittances from the G8 countries remained stable, at 6.59 percent in Q2 2018. Over the year, this figure has decreased 0.20 percentage points (from 6.79 percent in Q2 2017).

Figure 4 Total average in G8 countries



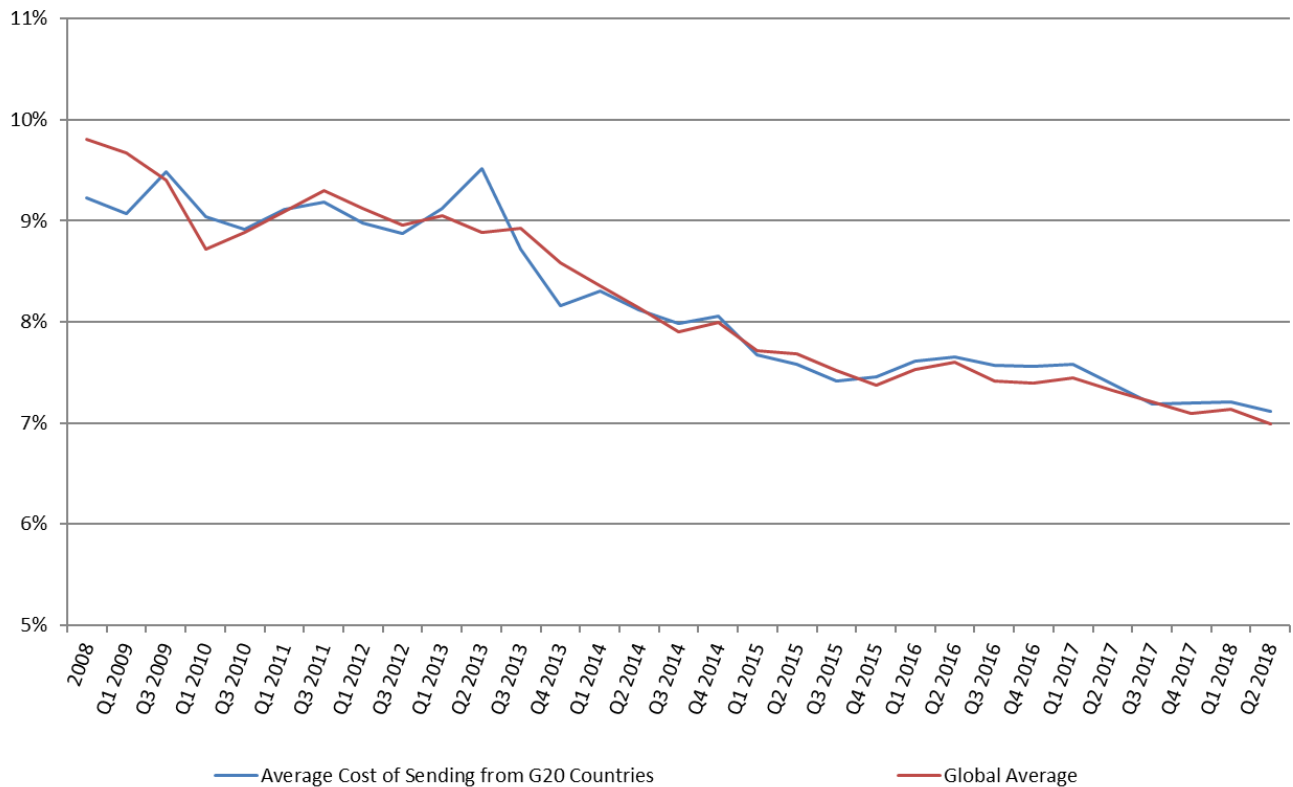
As Figure 4 illustrates, there are significant disparities in the cost levels across these countries (see also Table 2 in the Annex). The G8 countries that exhibited total average costs higher than the Global Average and the G8 average in Q2 2018 were Japan, Germany, and Canada. G8 countries exhibiting lower than the Global and G8 average in Q2 2018 included Russia, the United States, Italy, France, and the United Kingdom.

The largest decreases in total average cost to send remittances between Q1 2018 and Q2 2018 were seen in France (6.73 to 6.47), Germany (7.47 to 7.27) and the United Kingdom (7.11 to 6.97). The largest increases were seen in Japan (9.82 to 10.80) and Canada (7.25 to 7.45 percent).

Cost of sending remittances from and to G20 countries

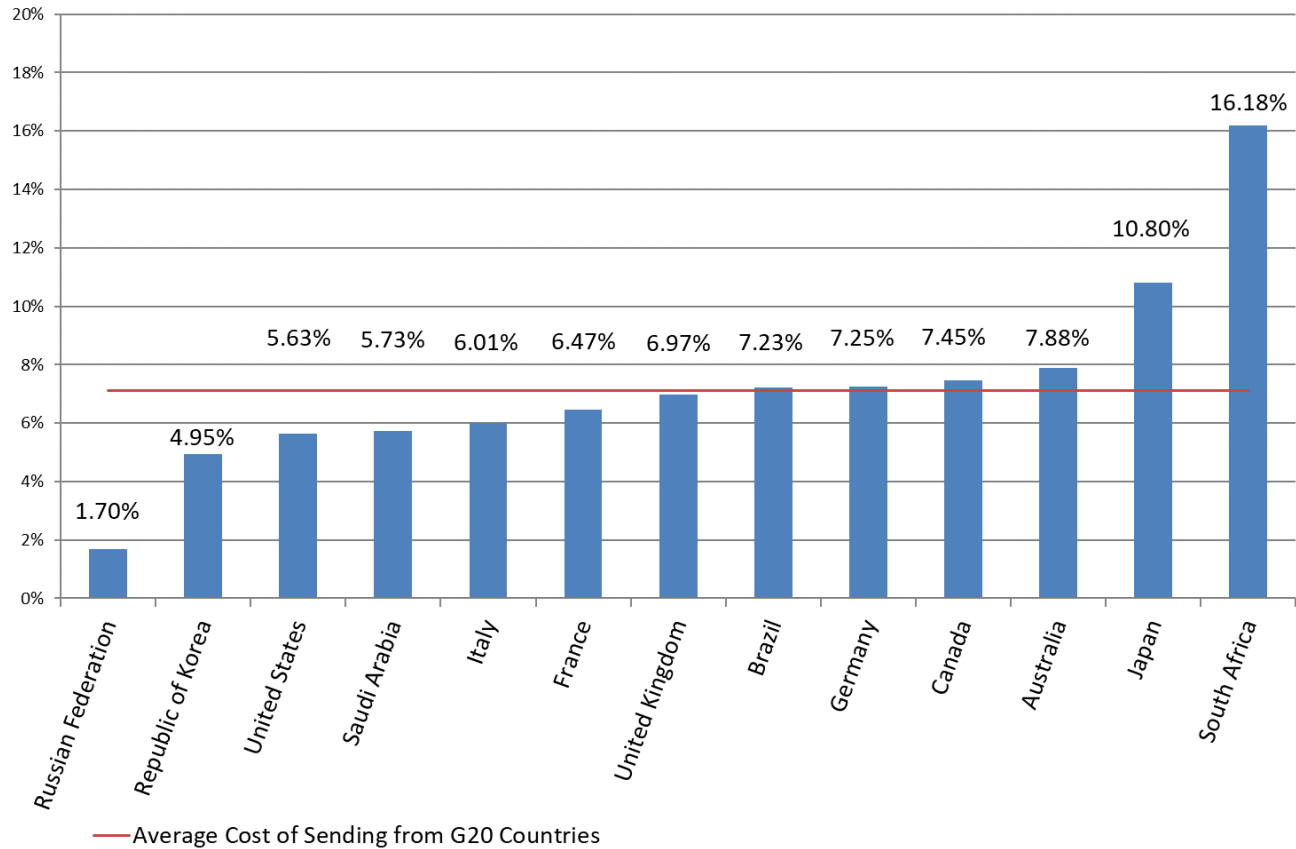
The cost of remitting from G20 countries remained stable at 7.12 percent in Q2 2018, as shown in Figure 5 (also see Table 3 in the Annex). This cost was 7.21 percent in Q1 2018.

Figure 5 Average cost of sending USD 200 from G20 countries



South Africa remained the costliest G20 country to send remittances from (see Figure 6), despite an overall decrease from its peak in Q1 2013, when the cost of sending from South Africa was more than 20 percent. In Q2 2018, remitting from South Africa incurred an average cost of 16.18 percent, which was lower than its recorded value of 17.13 percent in Q1 2018. The cost of sending remittances from the second most expensive G20 sending country – Japan – was recorded at 10.80 percent in Q2 2018. Russia remained the least expensive G20 sending country (1.70 percent), followed by the Republic of Korea (4.95 percent), the United States of America (5.63 percent) and Saudi Arabia (5.73 percent).

Figure 6 Average cost of remitting from G20 countries



Figures 7 and 8 display the total average cost of sending USD 200 to G20 countries over time and in Q2 2018, respectively (see also Table 4 in the Annex). The average cost of sending money to the G20 countries that are included in RPW as receiving markets was recorded at 6.57 percent in Q2 2018.

Apart from a few quarters, the average cost of sending money to the G20 countries has followed the pattern of the Global Average. For the 4th consecutive quarter since Q2 2017, the cost of remitting to G20 countries is recorded below the Global Average. The most expensive countries in this grouping to remit to were Turkey (8.01 percent), South Africa (8.00 percent), China (7.71 percent), Brazil (7.20 percent) and Indonesia (7.10 percent). The cost of sending remittances to India and Mexico were recorded below 7 percent. Mexico remained the cheapest receiving market in the G20 group, at 3.74 percent total average cost.

Figure 7 Average cost of sending USD 200 to G20 countries

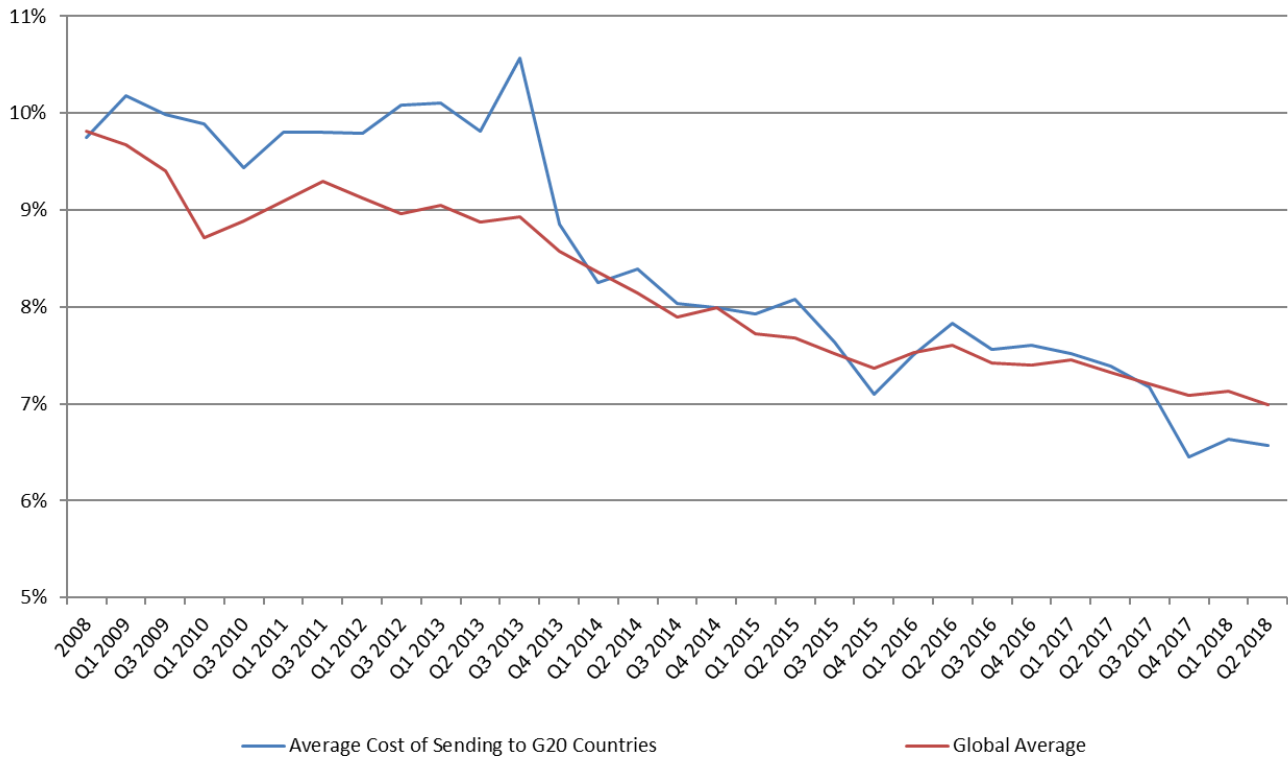
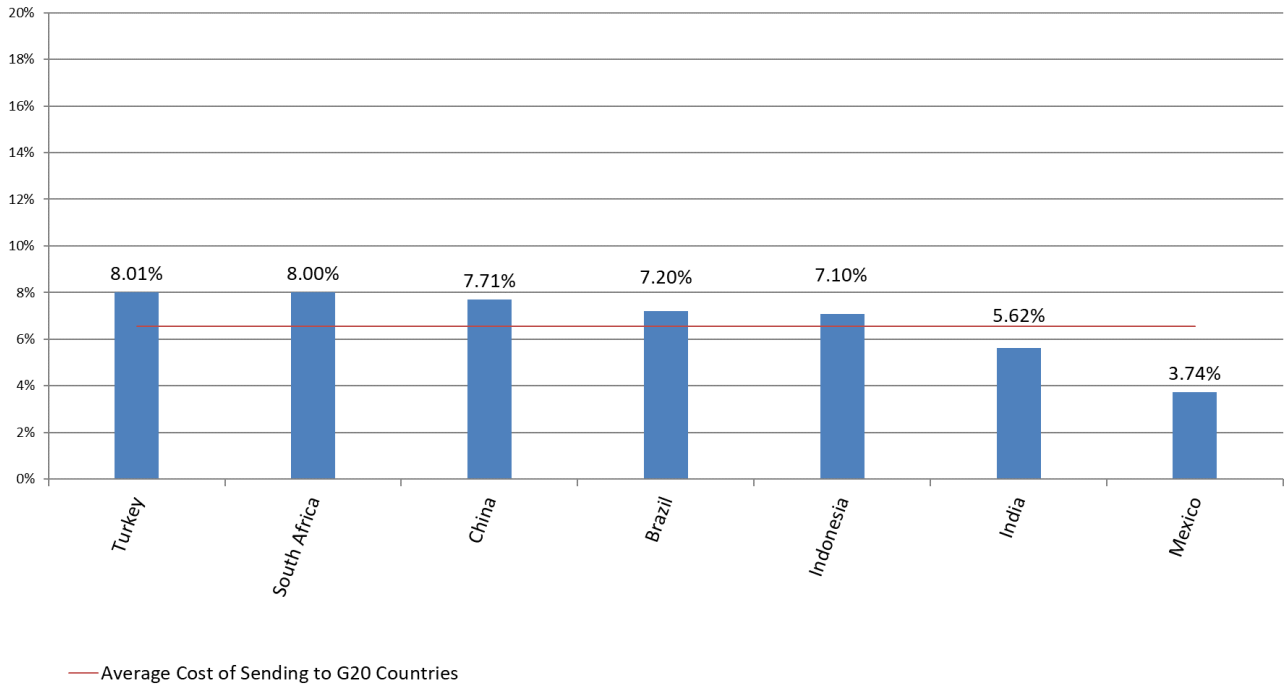


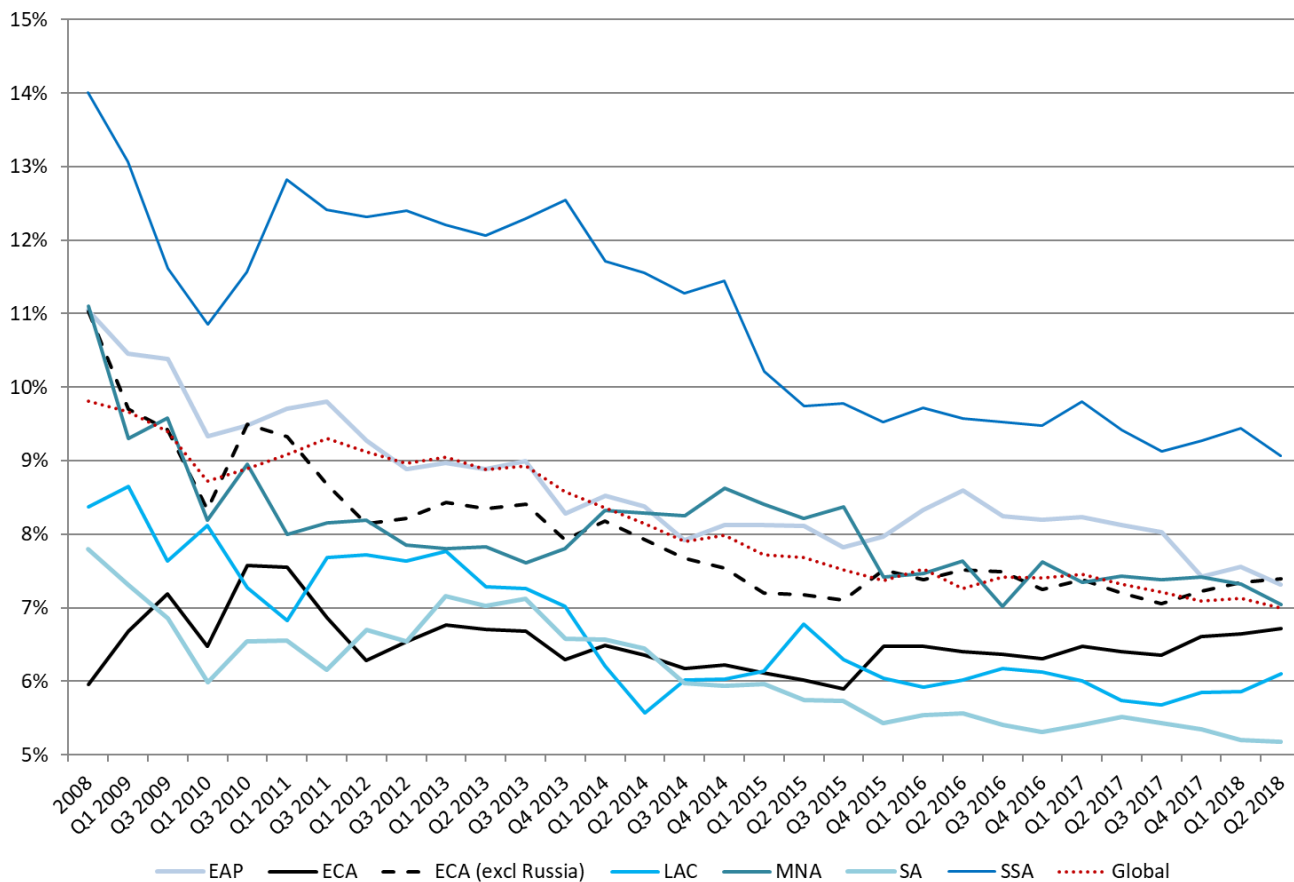
Figure 8 Average cost of remitting to G20 countries, by Country



Regional Trends

The cost for remittance services varies significantly depending on the region where the money is being sent to (see Figure 9 below, and Table 5 in the Annex). Latin America and the Caribbean experienced a modest increase in average costs between Q1 2018 and Q2 2018, rising from 5.86 percent to 6.10 percent. Average costs in South Asia and Europe and Central Asia remained stable between Q1 2018 and Q2 2018. The East Asia and the Pacific, Middle East and North Africa, and Sub-Saharan Africa regions recorded average costs above the Global Average.

Figure 9 Average costs by region of the world



Due to the unique features of the Russian remittance market and its heavy influence on the ECA region, an additional value for the ECA region, excluding Russia, has been calculated and considered; the average excluding Russia was 7.39 percent, which was only modestly higher than the average including Russia of 6.72 percent recorded in Q2 2018.

Costs by RSP Type

RPW tracks the cost of sending remittances for three main RSP types: Banks, MTOs, and Post Offices. Figure 10 provides a time series visual of all the RSP types included in the RPW dataset.

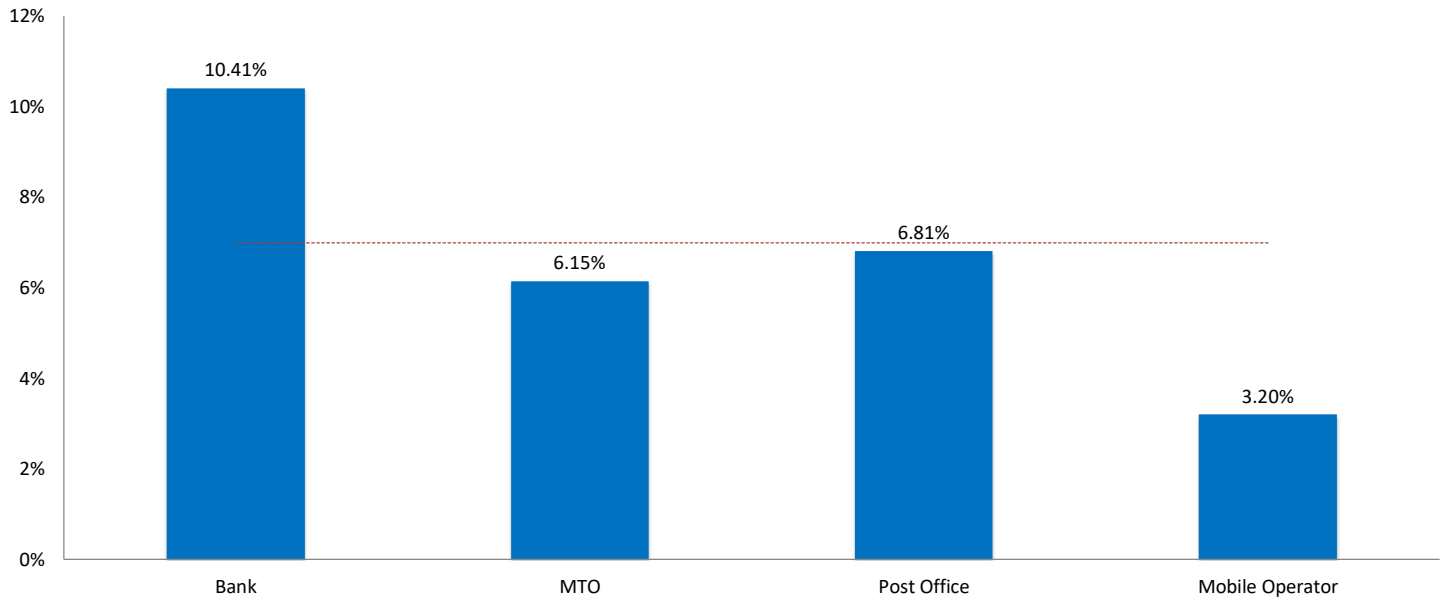
Over time, Banks and MTOs have seen a general decline of total average costs, while Post Office services have led a volatile trend and overall recorded periodic increases since the historic low recorded in Q3 2013. With a total average of 6.81 percent in Q2 2018, Post Offices fell below the Global Average. Banks are firmly above the Global Average, whereas MTOs remain below.

Figure 10 Total averages over time by RSP type



Figure 11 provides an overview for each RSP type in Q2 2018. Banks continued to be the costliest RSP type, with an average cost of 10.41 percent. Post Offices were recorded at 6.81 percent in Q2 2018. Money Transfer Operators were recorded at 6.15 percent, while Mobile Operators were the cheapest RSP type, at 3.20 percent.

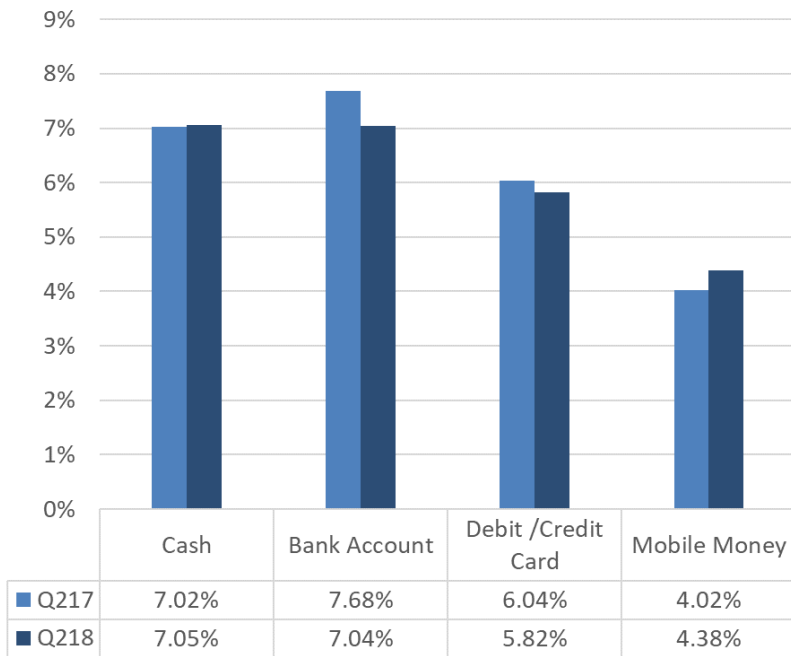
Figure 11 Total average by RSP type



Costs by Sending and Receiving Method

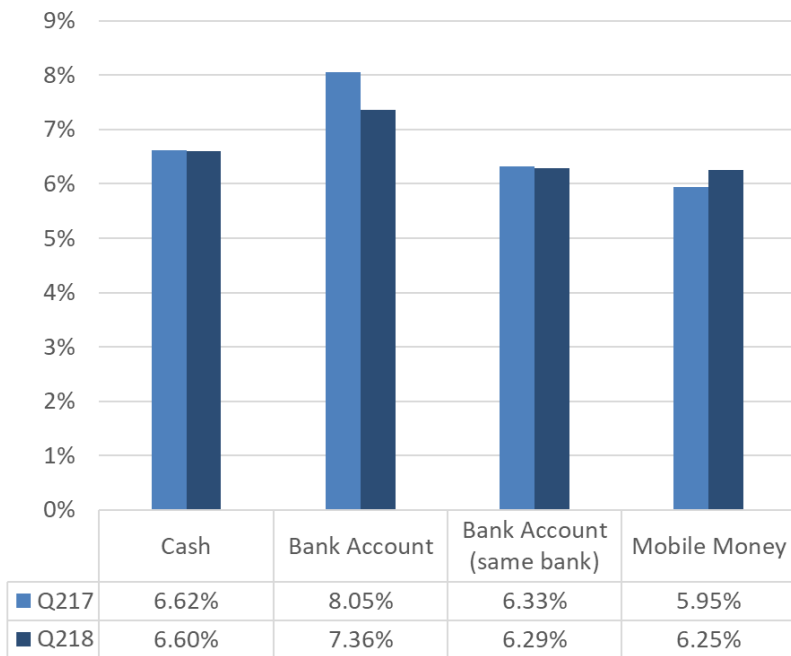
RPW captures separately the payment instrument used to fund the transaction and the one used to disburse the funds to the receiver. This approach is reflected in the charts below. It allows the analysis to be further refined to increase its adaptability to new products that might emerge. This approach has proven particularly useful in monitoring innovative products and players.

Figure 12 Average Cost by Instrument Used to Fund the Transaction



In Q2 2018, the cheapest method for funding a remittance transaction was Mobile Money at 4.38 percent (41 services recorded in RPW). The average cost when using a Debit/Credit Card (1,089 services) was 5.82 percent. Cash (2,098 services) exhibited a total average cost of 7.05 percent, which was modestly more expensive than funding a transaction with a bank account (1,705 services), at 7.04 percent.

Figure 13 Average Cost by Means of Disbursing the Funds



The cost of sending remittances to a bank account within the same bank or to a partner of the originating bank (88 services) was recorded at 6.29 percent in Q2 2018. In contrast, sending money to a bank account at a different bank (1,474 services), was the most expensive option at 7.36 percent. When funds are sent to a mobile wallet (184 services) the average cost in Q2 2018 was 6.25 percent. Services where money is disbursed in cash (2,753 services) cost on average 6.60 percent.

Annex - Tables

Table 1 – International MTO Index, Global Weighted Average (%)

	Q2 2013	Q3 2013	Q4 2013	Q1 2014	Q2 2014	Q3 2014	Q4 2014	Q1 2015	Q2 2015	Q3 2015	Q4 2015	Q1 2016	Q2 2016	Q3 2016	Q4 2016	Q1 2017	Q2 2017	Q3 2017	Q4 2017	Q1 2018	Q2 2018
Intl MTO Index	8.86	8.95	8.74	8.35	8.22	8.04	8.23	8.03	8.16	8.04	8.05	8.25	8.14	8.05	8.07	8.25	8.20	8.14	8.23	8.16	8.00
Global Weighted Average	6.63	6.62	6.13	5.91	5.85	5.71	6.03	5.94	5.92	5.91	5.60*	5.68	5.68	5.73	5.65	5.65	5.57	5.45	5.29	5.23	5.18
Global Average	8.88	8.93	8.58	8.36	8.14	7.90	7.99	7.72	7.68	7.52	7.37	7.53	7.60	7.42	7.40	7.45	7.32	7.21	7.09	7.13	6.99

Table 2 – Quarterly and Yearly Variation for G8 Countries (Q2 2013 – Q2 2018) (%)

	Q2 2013	Q3 2013	Q4 2013	Q1 2014	Q2 2014	Q3 2014	Q4 2014	Q1 2015	Q2 2015	Q3 2015	Q4 2015	Q1 2016	Q2 2016	Q3 2016	Q4 2016	Q1 2017	Q2 2017	Q3 2017	Q4 2017	Q1 2018	Q2 2018
Canada	11.09	10.97	10.79	10.31	9.50	9.31	9.52	9.34	9.31	9.08	8.05	7.80	8.01	8.36	8.39	7.84	7.21	7.29	7.29	7.25	7.45
France	10.96	10.48	10.43	10.91	10.65	10.74	10.70	7.45	7.22	7.56	6.91	6.82	6.73	6.67	6.94	6.97	7.04	6.57	6.53	6.73	6.47
Germany	9.62	9.01	9.31	8.37	8.03	7.76	8.43	7.43	7.48	7.32	7.64	8.12	8.52	8.56	7.97	8.23	7.73	7.57	7.20	7.47	7.25
Italy	7.31	7.42	7.28	7.06	6.70	6.83	6.73	6.49	6.49	6.05	6.02	6.42	6.40	5.98	6.23	5.92	6.10	5.98	6.20	6.14	6.01
Japan	18.31	16.57	15.73	14.36	14.00	13.74	13.28	13.43	13.55	12.97	11.95	12.43	12.48	11.30	11.70	11.65	10.77	10.85	9.52	9.82	10.80
Russia	2.34	2.43	2.44	2.16	1.92	1.83	2.44	2.82	2.51	1.92	1.95	2.11	2.05	1.71	2.12	2.09	1.78	2.13	1.75	1.64	1.70
UK	7.69	8.40	8.38	7.86	7.80	7.56	7.55	7.49	7.20	7.41	7.25	7.29	7.25	7.35	7.43	7.86	7.55	7.01	7.29	7.11	6.97
USA	6.65	6.42	6.18	5.80	5.78	5.92	5.97	5.92	6.30	6.04	5.93	6.03	6.06	6.09	6.01	5.76	5.68	5.71	5.80	5.67	5.63
G8 Average	9.19	8.44	8.20	7.73	7.54	7.49	7.54	7.19	7.17	7.02	6.89	7.06	7.19	6.97	7.02	6.99	6.79	6.66	6.66	6.64	6.59
Global Average	8.88	8.93	8.58	8.36	8.14	7.90	7.99	7.72	7.68	7.52	7.37	7.53	7.60	7.42	7.40	7.45	7.32	7.21	7.09	7.13	6.99

Table 3 – Total Average in G20 Sending Countries (%)

	Q2 2013	Q3 2013	Q4 2013	Q1 2014	Q2 2014	Q3 2014	Q4 2014	Q1 2015	Q2 2015	Q3 2015	Q4 2015	Q1 2016	Q2 2016	Q3 2016	Q4 2016	Q1 2017	Q2 2017	Q3 2017	Q4 2017	Q1 2018	Q2 2018
Australia	10.21	10.19	9.12	9.80	9.60	8.88	8.92	8.97	9.22	9.24	9.60	9.50	9.76	9.66	9.52	9.65	9.31	8.84	8.43	8.15	7.88
Brazil	6.35	5.94	9.65	6.35	4.24	5.26	4.74	5.02	5.72	7.40	6.81	6.76	6.05	5.73	5.48	5.86	3.47	4.64	5.84	4.93	7.23
Canada	11.09	10.97	10.79	10.31	9.50	9.31	9.52	9.34	9.31	9.08	8.05	7.80	8.01	8.36	8.39	7.84	7.21	7.29	7.29	7.25	7.45
France	10.96	10.48	10.43	10.91	10.65	10.74	10.70	7.45	7.22	7.56	6.91	6.82	6.73	6.67	6.94	6.97	7.04	6.57	6.53	6.73	6.47
Germany	9.62	9.01	9.31	8.37	8.03	7.76	8.43	7.43	7.48	7.32	7.64	8.12	8.52	8.56	7.97	8.23	7.73	7.57	7.20	7.47	7.25
Italy	7.31	7.42	7.28	7.06	6.70	6.83	6.73	6.49	6.49	6.05	6.02	6.42	6.40	5.98	6.23	5.92	6.10	5.98	6.20	6.14	6.01
Japan	18.31	16.57	15.73	14.36	14.00	13.74	13.28	13.43	13.55	12.97	11.95	12.43	12.48	11.30	11.70	11.65	10.77	10.85	9.52	9.82	10.80
Korea	6.20	6.43	6.08	5.98	5.99	6.00	6.20	6.19	6.09	5.43	5.54	5.61	5.33	5.06	4.99	4.87	5.42	4.81	5.03	5.15	4.95
Russia	2.34	2.43	2.44	2.16	1.92	1.83	2.44	2.82	2.51	1.92	1.95	2.11	2.05	1.71	2.12	2.09	1.78	2.13	1.75	1.64	1.70
Saudi Arabia	4.46	4.05	4.19	4.09	4.45	3.85	4.41	4.68	4.06	4.13	5.05	4.91	4.56	4.59	4.77	5.20	5.55	4.74	5.45	5.71	5.73
South Africa	20.69	19.29	18.16	19.80	19.56	19.54	19.76	18.00	16.79	15.19	16.59	16.20	16.72	16.95	17.88	17.78	16.76	16.57	16.17	17.13	16.18
UK	7.69	8.40	8.38	7.86	7.80	7.56	7.55	7.49	7.20	7.41	7.25	7.29	7.25	7.35	7.43	7.86	7.55	7.01	7.29	7.11	6.97
USA	6.65	6.42	6.18	5.80	5.78	5.92	5.97	5.92	6.30	6.04	5.93	6.03	6.06	6.09	6.01	5.76	5.68	5.71	5.80	5.67	5.63
G8	9.19	8.44	8.20	7.73	7.54	7.49	7.54	7.19	7.17	7.02	6.89	7.06	7.69	6.97	7.02	6.99	6.79	6.66	6.66	6.64	6.59
From G20	9.52	8.72	8.16	8.31	8.12	7.98	8.06	7.67	7.58	7.42	7.46	7.61	7.65	7.57	7.56	7.58	7.38	7.17	7.20	7.21	7.12
Global Average	8.88	8.93	8.58	8.36	8.14	7.90	7.99	7.72	7.68	7.52	7.37	7.53	7.60	7.42	7.40	7.45	7.32	7.21	7.09	7.13	6.99

Table 4 - Total Average in G20 Receiving Countries (Cost of Sending Money to Select Countries, %)

	Q2 2013	Q3 2013	Q4 2013	Q1 2014	Q2 2014	Q3 2014	Q4 2014	Q1 2015	Q2 2015	Q3 2015	Q4 2015	Q1 2016	Q2 2016	Q3 2016	Q4 2016	Q1 2017	Q2 2017	Q3 2017	Q4 2017	Q1 2018	Q2 2018
Brazil	11.56	11.94	10.97	6.35	7.43	7.66	7.91	7.96	9.38	7.01	5.95	6.96	6.76	6.81	7.58	6.89	6.33	6.33	6.48	6.45	7.20
China	11.59	11.99	11.13	10.58	10.89	10.49	10.49	10.54	10.38	10.18	9.72	10.36	10.61	10.24	10.31	10.26	10.28	10.00	7.92	8.26	7.71
India	9.18	8.57	7.86	7.57	7.62	7.00	6.88	6.78	6.88	6.50	6.00	6.17	6.59	6.23	6.05	6.14	6.04	5.98	5.62	5.63	5.62
Indonesia	6.67	7.61	6.53	7.10	7.38	7.32	7.34	6.74	6.69	6.90	6.77	7.25	8.14	7.43	7.81	7.84	7.87	7.13	6.60	7.59	7.10
Mexico	5.67	4.41	5.29	4.48	4.51	4.48	4.37	4.62	5.30	5.59	4.75	5.09	4.97	6.35	4.74	4.85	5.11	4.86	4.45	4.43	3.74
South Africa	9.87	9.55	8.39	7.63	7.62	9.27	9.06	8.25	7.78	8.98	8.89	8.97	8.49	7.77	8.05	7.56	8.02	8.07	8.55	7.83	8.00
Turkey	8.43	7.95	7.24	7.02	7.28	6.91	6.42	6.72	6.79	6.95	6.89	6.94	6.55	7.40	7.86	7.62	7.14	6.84	7.28	7.34	8.01
To G20	9.81	10.57	8.86	8.25	8.39	8.02	7.99	7.93	8.08	7.42	7.10	7.51	7.83	7.56	7.60	7.52	7.39	7.17	6.45	6.63	6.57
Global Average	8.88	8.93	8.58	8.36	8.14	7.90	7.99	7.72	7.68	7.52	7.37	7.53	7.60	7.42	7.40	7.45	7.32	7.21	7.09	7.13	6.99

Table 5 - Total Average by Regions of The World (%)

	Q2 2013	Q3 2013	Q4 2014	Q1 2014	Q2 2014	Q3 2014	Q4 2014	Q1 2015	Q2 2015	Q3 2015	Q4 2015	Q1 2016	Q2 2016	Q3 2016	Q4 2016	Q1 2017	Q2 2017	Q3 2017	Q4 2017	Q1 2018	Q2 2018
EAP	8.88	9.00	8.28	8.52	8.38	7.92	8.12	8.13	8.11	7.82	7.97	8.33	8.49	8.24	8.20	8.24	8.12	8.03	7.42	7.55	7.32
ECA	6.70	6.68	6.29	6.49	6.35	6.17	6.22	6.11	6.02	5.89	6.48	6.48	6.40	6.36	6.30	6.48	6.41	6.36	6.61	6.65	6.72
ECA (excluding Russia)	8.35	8.41	7.93	8.18	7.92	7.67	7.54	7.20	7.18	7.10	7.51	7.47	7.51	7.49	7.25	7.38	7.20	7.05	7.23	7.34	7.39
LAC	7.28	7.26	7.02	6.21	5.57	6.02	6.03	6.14	6.78	6.29	6.04	5.92	6.02	6.17	6.12	6.01	5.74	5.68	5.85	5.86	6.10
MNA	7.83	7.61	7.80	8.32	8.29	8.25	8.63	8.41	8.21	8.37	7.42	7.46	7.63	7.02	7.63	7.35	7.43	7.38	7.41	7.32	7.04
SA	7.02	7.12	6.58	6.56	6.45	5.97	5.94	5.96	5.74	5.73	5.43	5.54	5.56	5.41	5.31	5.40	5.52	5.43	5.34	5.21	5.17
SSA	12.06	12.29	12.55	11.71	11.55	11.28	11.45	10.21	9.74	9.78	9.53	9.72	9.58	9.52	9.48	9.81	9.42	9.08	9.27	9.44	9.07
Global	8.88	8.93	8.58	8.36	8.14	7.90	7.99	7.72	7.68	7.52	7.37	7.53	7.60	7.42	7.40	7.45	7.32	7.21	7.09	7.13	6.99

Abbreviations: EAP- East Asia and Pacific; ECA- Europe and Central Asia; LAC- Latin America and the Caribbean; MNA- Middle East and North Africa; SA- South Asia; SSA-Sub-Saharan Africa

Notes

ⁱ The International MTOs Index includes all MTOs that are present in over 85 percent of RPW corridors. Thus far, it has included Western Union and MoneyGram, which operate in 99 percent and 92 percent of the country corridors covered in the database, respectively.

ⁱⁱ It is important to note that, while official data on remittance flows by bilateral corridors are currently not available, estimates (Ratha and Shaw 2007, last updated in 2017, available at <http://go.worldbank.org/JITC7NYTTQ>) have been used in this calculation. These estimates are based on the Balance of Payments (BOP) and factor in migrant stocks, destination country incomes, and source country incomes. The methodology for these estimates has been questioned, as well as the accuracy of official data on remittance flows and migrant stocks. However, this still represents the only available comprehensive dataset on bilateral remittance flows. It also seems likely that overall, the dataset is sufficiently accurate to reflect at least the proportion between the different corridors, hence offering a good approximation to weight the relevance of each corridor in terms of flow size.

ⁱⁱⁱ Figures for the global average were adjusted in Q1 2014 following a clean-up of the entire database. Some values slightly vary from figures published in the past.

^{iv} For additional information on the methodology used to calculate SmaRT see https://remittanceprices.worldbank.org/sites/default/files/smart_methodology.pdf